

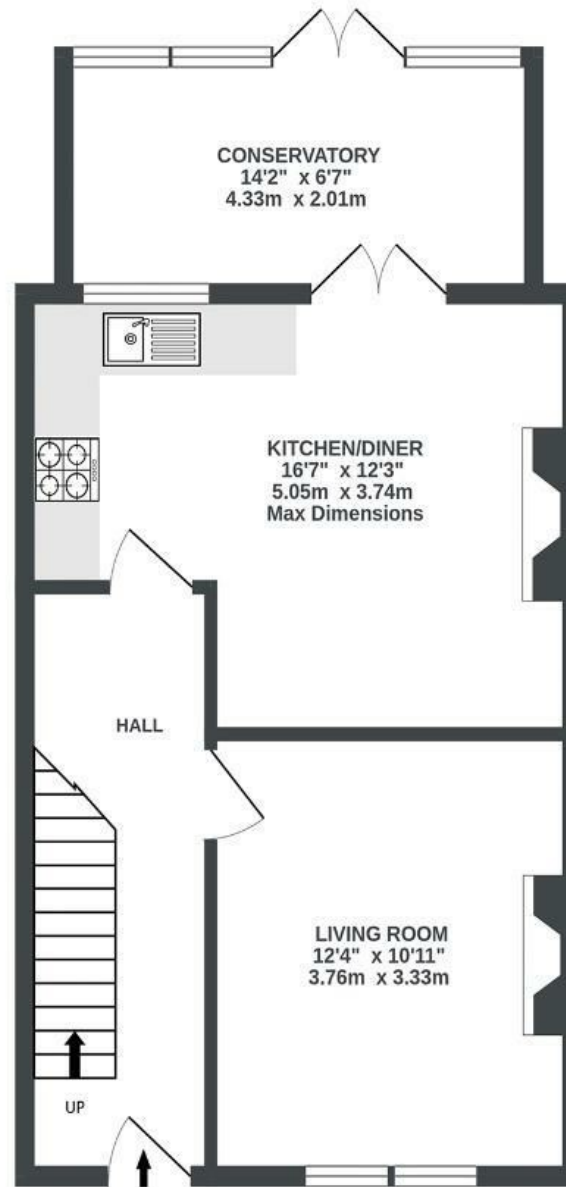
Narrowways Road

EASTVILLE

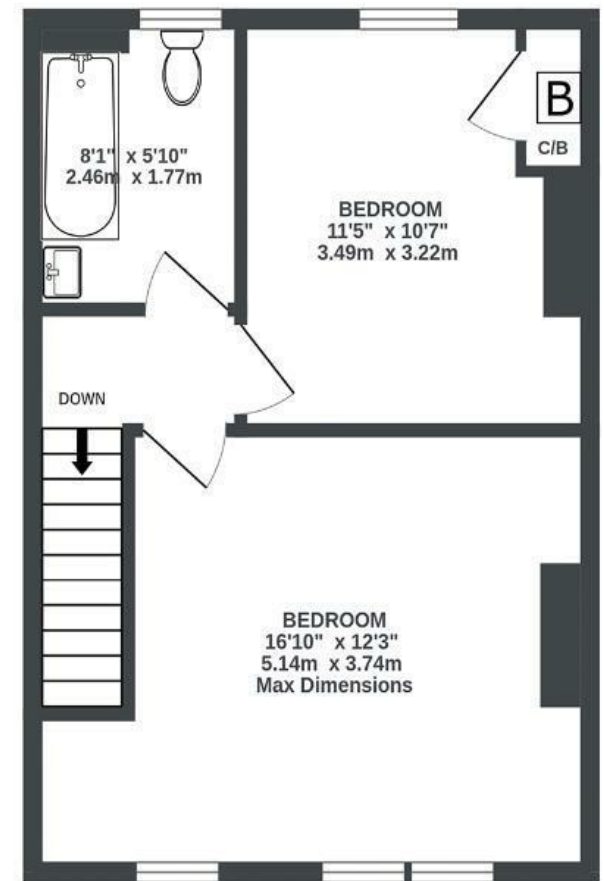
APPROXIMATE FLOOR AREA
81.7 SQM / 880 SQFT



GROUND FLOOR
490 sq.ft. (45.5 sq.m.) approx.



1ST FLOOR
390 sq.ft. (36.2 sq.m.) approx.



Boardwalk

Narrowways Road , BRISTOL

£

£385,000



BS2 9XB

zzz

2 Bedrooms



1 Bathrooms

"Narrowways Road is a real gem. A community feel, with everyone respectful of one another. Some great street parties have happened over the years, and it's lovely to see everyone getting along with children playing nearby. Eastville Park is 10 minutes walk away, also restaurants are 5 minutes walk away on Mina Road. The buzzing area of Montpelier and Stokes Croft is walkable with many different restaurants, Caribbean Croft is my favourite, to experience. It will be sad to leave this little gem."

